



Impact Report

Review the reach of Lexile® and Quantile® measures across New Hampshire.



**NEW HAMPSHIRE
DEPARTMENT OF EDUCATION**

MetaMetrics State Partner Since 2019



◆ We are grateful to be on your team and in your circle.

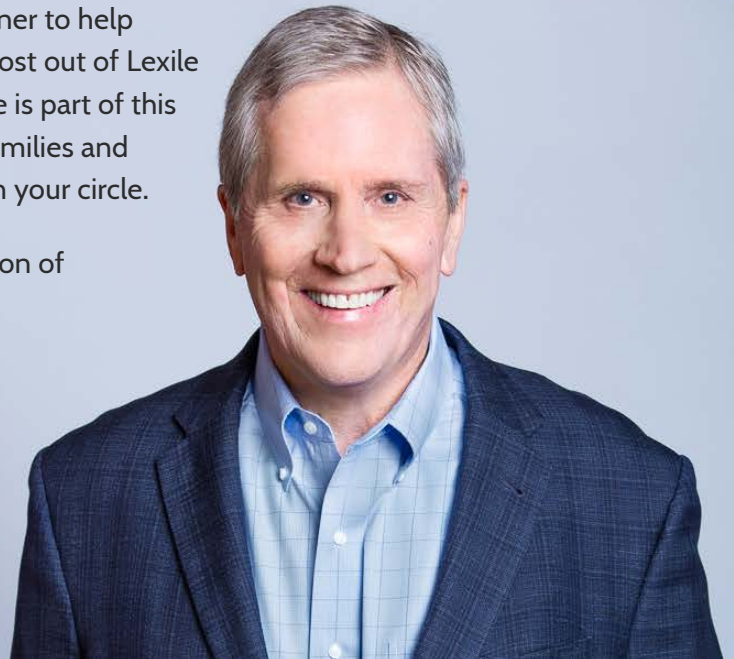
When my co-founder and I first started MetaMetrics over 35 years ago, our goal was to connect test scores with learning. Thanks to initial funding by the National Institute of Child Health and Human Development (NICHD), we were able to conduct the research needed to develop the **Lexile® Framework for Reading**. Now, more than 263,000 students in your state receive these measures.

A successful partnership begins with trust. At MetaMetrics we are more than a company, we strive to be a trusted partner to help state education agencies and educators make the most out of Lexile and Quantile measures. The state of New Hampshire is part of this trusted circle, working to do the best for students, families and educators. We are grateful to be on your team and in your circle.

It is our pleasure to support you in the implementation of Lexile and Quantile measures.



Dr. Malbert Smith, III
CEO and Co-founder



LUCI WILLITS • SENIOR VICE PRESIDENT, GOVERNMENT RELATIONS

Luci leads your dedicated team at MetaMetrics. Prior to MetaMetrics, Luci worked in publishing and testing at Curriculum Associates and Smarter Balanced. Luci also led the Idaho State Department of Education as Chief of Staff for nearly a decade passing more than 100 education policy changes. Learn more about Luci and her team on page 14!

◆ In this report, you'll find...

4

STATE PARTNERSHIP PROFILE

Overview of our partnership over the years.

5

PARTNERSHIP FOCUS

MetaMetrics communications and no cost supports.

6

NEW HAMPSHIRE COMMUNICATIONS

Lexile and Quantile measures in New Hampshire media.

7

PROFESSIONAL LEARNING

Summary of sessions so far this school year.

8

DISTRICT IMPLEMENTATION

Examples of how districts use Lexile and Quantile measures.

11

ONLINE PD COURSES

Learn about the *Lexile*® & *Quantile*® Educator Academy.

10-11

TOOL SPOTLIGHT

A few of the tools free for New Hampshire educators.

12

READING RESEARCH RECAP

Monthly summaries of the latest research.

13

KUDOS TO YOUR TEAM

Shouts out to New Hampshire Department of Education.

14

METAMETRICS TEAM

About your dedicated team at MetaMetrics.



APPENDIX

Comparing 2022 State Assessment Results With Grade Level Demands in Reading and Mathematics

REPORT OFFERING & SAMPLE RESULTS (PAGES 15-17)



NEW HAMPSHIRE DEPARTMENT OF EDUCATION FIRST PARTNERED WITH METAMETRICS IN 2019

MetaMetrics has reported hundreds of thousands of Lexile and Quantile measures for New Hampshire students over the years. In the 2019, the New Hampshire Department of Education signed on as a MetaMetrics state partner.



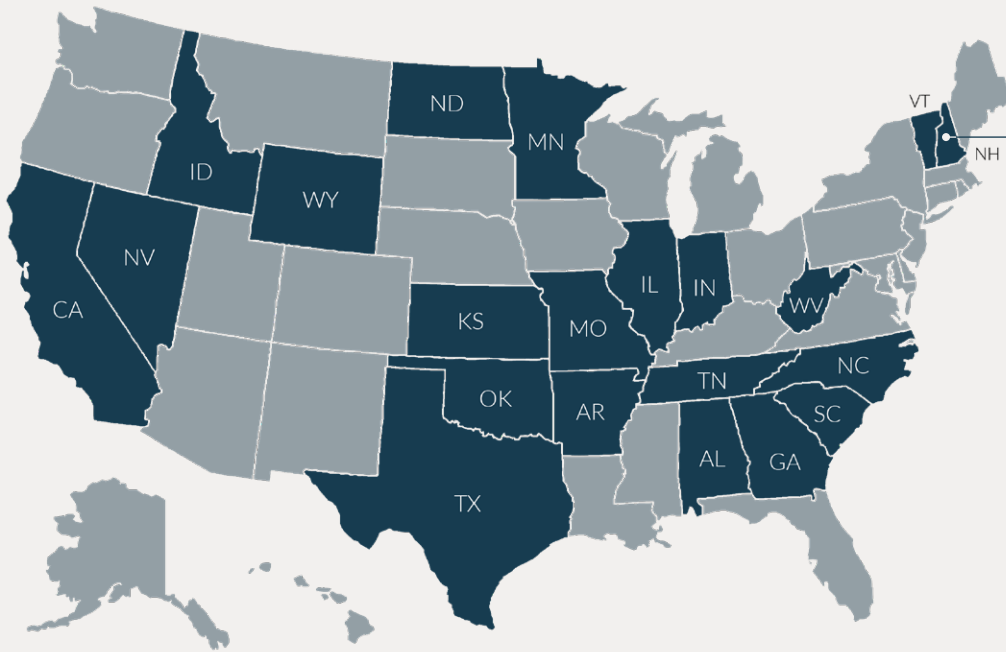
11th

IN THE NATION
POWER RANKING

Power Rankings identify the states where, on a per capita basis, we see the highest uptake of Lexile® & Quantile® Hub (Hub.Lexile.com) registrations among educators.

522

NH EDUCATORS
ARE REGISTERED
ON THE LEXILE &
QUANTILE HUB.



MetaMetrics State Department of Education Partner

Lexile/Quantile measures available at the local level

2019

2020

2021

2022

2023

New Hampshire Statewide Assessment System

Lexile and Quantile measures reported for grades 3 - 8 and 11.



New Hampshire State Assessments Linked to the Lexile and Quantile Frameworks

You told us
your goals.

Here's how
we're here for
you.

SY 2022-2023



◆ No Cost Implementation Supports*

- Professional learning opportunities
- Access to Lexile and Quantile tools
- NH DOE Lexile and Quantile website content
- Reporting Lexile and Quantile measures
- Communication and outreach support
- Family engagement support
- Thought partnership

* No Cost Implementation Supports Overview:
metametricsinc.com/states-products-and-services-pdf

◆ Communications

Your dedicated team at MetaMetrics is available for quarterly calls and beyond.

Thanks for meeting on September 7, 2022, October 19, 2022 and January 9, 2023!

- We look forward to speaking again on April 10, 2023.

Drop in for our virtual office hours:

- Every Monday 3:00-5:00 ET
zoom.us/j/95027749445
- Every Friday 11:00-1:00 ET
zoom.us/j/92206409606

◆ New Hampshire Communication Highlights

Here are some of the ways educators, students and families learn about Lexile and Quantile measures on New Hampshire's DOE website.

- Lexile and Quantile Measures in New Hampshire

<https://www.education.nh.gov/who-we-are/division-of-learner-support/bureau-of-instructional-support/office-of-assessment/lexile>

- Professional Learning Opportunities

<https://www.education.nh.gov/who-we-are/division-of-learner-support/bureau-of-instructional-support/professional-learning>

THANKS FOR SHARING LEXILE AND QUANTILE RESOURCES!

Have you seen our latest overview video for families? Produced in partnership with Learning Heroes, it gives parents, caretakers and educators insight into how Lexile and Quantile measures can support learning at home.

WATCH AND SHARE IT!
[YOUTUBE.COM/WATCH?V=V4EXZDRXMGW](https://www.youtube.com/watch?v=V4EXZDRXMGW)

ALSO AVAILABLE IN SPANISH:
[YOUTUBE.COM/WATCH?V=AKWW5LB2JSI](https://www.youtube.com/watch?v=AKWW5LB2JSI)



Professional Learning

Share our “bite-sized” professional learning screencast series with New Hampshire educators.

20 MINUTES

An Introduction to the Lexile Framework for Reading

https://zoom.us/rec/share/551LKfbR2XNlfPXdW2D2RfMhFa_5aaa8hHle_vMFzE-mWlonOfUoczHXDt5pytDz?startTime=1597766002000

20 MINUTES

An Introduction to the Quantile Framework for Mathematics

https://zoom.us/rec/play/78cplu-grm03Hoed5QSDV_4qW43rL6ysgSZK_fpemknkUnRXZgKlbrCXaubuRvsUSPnnOeOz3cV7lduF?continueMode=true

12 MINUTES

Let's Explore the Lexile & Quantile Hub

<https://zoom.us/rec/share/GBGltOzleQRAOeTIY2ctCAmCImXqmVNblyBKDEOLQZsZAbpTjO1NNHqAwXhS2HxQ.zzEjXaYIZG6oMnUh>

20 MINUTES

Family Engagement in Reading and Math

https://us06web.zoom.us/rec/play/9zBCleBn52oRGX3QRV1Au79iS6r3GKRlp-psBvyStW9_nb8xwMPfJDmn2LZFVAOrWrpUvBqAU6gPIo.udqhhWf17TaSANmH?autoplay=true

19 MINUTES

Putting the Lexile Framework for Reading to Work in the Library

https://zoom.us/rec/play/qhdzdsBgMjln68qZiszMlu2v9sstrYCW29Vqr5TceTdoggkQHbnA_ynpuywnXFUldnEjHOweZ43gvPe.OIKkYzyGZSr_s2bz?autoplay=true&startTime=1644338092000



The MetaMetrics' Professional Learning Team is available for in-person sessions!

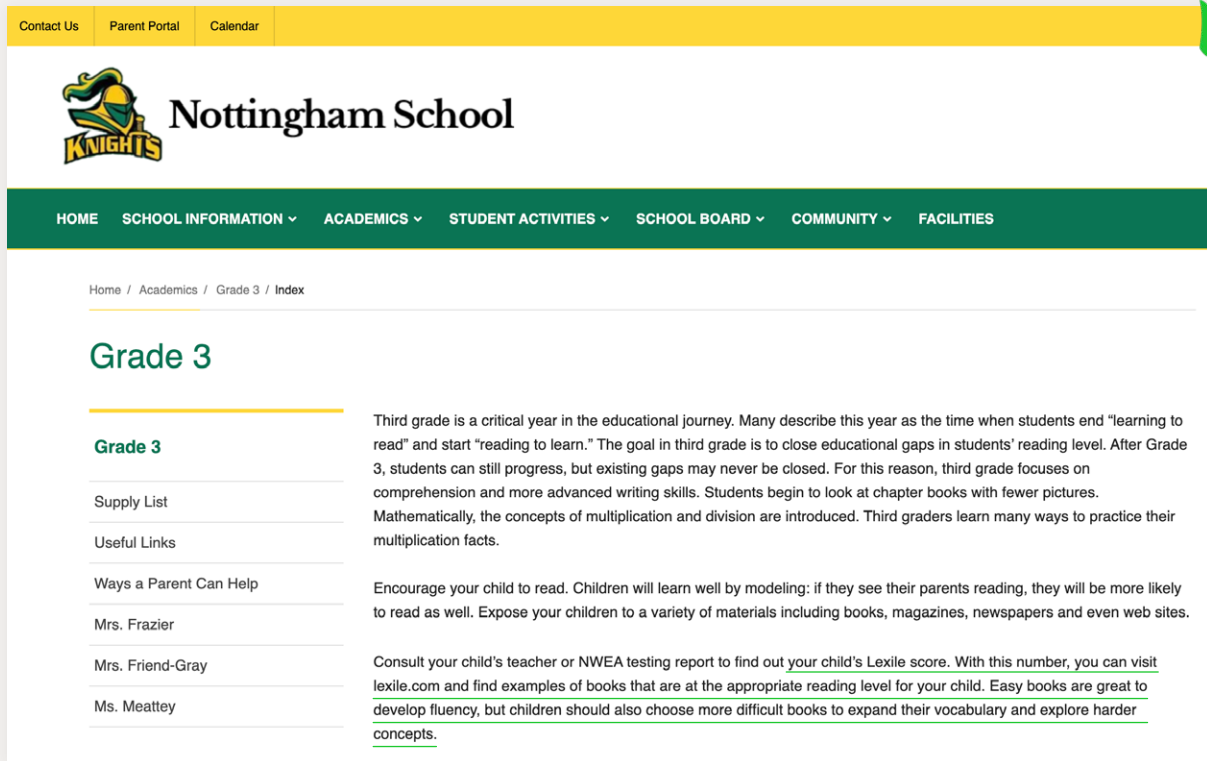


WANT TO LEARN MORE ABOUT PROFESSIONAL LEARNING OPPORTUNITIES?

metametricsinc.com/professional-learning

◆ District Examples of Implementation

Teachers at [Nottingham School \(SAU 107\)](https://www.nottingham.k12.nh.us/academics/grade-3/index) (<https://www.nottingham.k12.nh.us/academics/grade-3/index>) use NWEA® Map® to monitor Lexile scores and encourage families to help guide their students' reading choices. The school district also links to [lexia.com](https://www.lexia.com) under their resources section (<https://www.nottingham.k12.nh.us/academics/curriculum/resources-and-games>).



The screenshot shows the Nottingham School website. At the top, there is a yellow navigation bar with links for 'Contact Us', 'Parent Portal', and 'Calendar'. Below this is the school's logo, a knight, and the name 'Nottingham School'. A green navigation bar contains links for 'HOME', 'SCHOOL INFORMATION', 'ACADEMICS', 'STUDENT ACTIVITIES', 'SCHOOL BOARD', 'COMMUNITY', and 'FACILITIES'. The main content area is titled 'Grade 3' and includes a sidebar with links for 'Grade 3', 'Supply List', 'Useful Links', 'Ways a Parent Can Help', and a list of staff members: Mrs. Frazier, Mrs. Friend-Gray, and Ms. Meattay. The main text describes the importance of third grade and provides information on how parents can help their child read. A green arrow points to the 'Resources and Games' link in the footer.

Litchfield School District has Lexile measures written into their ELA Approved Curriculum under Range of Reading and Level of Text Complexity for grades 1-12.



The screenshot shows the Litchfield School District website. The header includes the district logo and name, along with a search bar. The navigation bar contains links for 'District', 'School Board', 'Schools', 'Staff', 'Parents', and 'Students'. The main content area is titled 'Curriculum' and includes a sidebar with links for 'Curriculum, Instruction & Assessment', 'Curriculum', 'Title I', and 'Grading'. The main text describes the district's curriculum, instruction, and assessment programs. A green arrow points to the 'Approved Curriculum' section, which includes links for 'Business Approved Curriculum', 'ELA Approved Curriculum', and 'FACS Approved Curriculum'.

[HTTPS://WWW.LITCHFIELDSD.ORG/CURRICULUM.ASPX](https://www.litchfieldsd.org/curriculum.aspx)



◆ Put the Lexile® & Quantile® Certification Courses on your districts' supply lists!

The Lexile and Quantile Educator Academy offers two courses to help educators put Lexile and Quantile measures into practice to drive student growth. These courses, eligible for ESSER funding, are delivered in a flexible, asynchronous format with the opportunity for collaboration with an online professional learning community. The Educator Academy was developed in partnership with the University of North Carolina at Chapel Hill according to instructional design best practices for educators. The courses empower educators to:

- Lead the way in delivering data-driven instruction using Lexile and Quantile measures as a Certified Lexile and Quantile Educator.
- Leverage award-winning tools on the Lexile and Quantile Hub to complete performance tasks that are aligned with real-life scenarios for immediate implementation.
- Collaborate with a professional learning community of educators to create classroom support materials and improve instructional planning with additional resources.
- Develop strategies to communicate effectively with parents and peers on the significance of Lexile and Quantile measures and best practices for classroom instruction.



ISTATION IS THE EXCLUSIVE
RESELLER FOR THE EDUCATOR
ACADEMY. LEARN MORE AT:

info.istation.com/lexile-quantile-academy



◆ Looking for tools to support phonics instruction?

We are excited to share two new tools that do just that: **Lexile® Find a Decodable Book** and **Lexile® Decodable Passages**! Find a Decodable Book (hub.lexile.com/find-a-decodable-book) is a resource that helps readers crack the alphabetic code by finding books that match instruction. Decodable Passages (hub.lexile.com/decodable-passages) provides access to online passages students can read to practice specific phonics skills. As one of our partner states, both tools are free for New Hampshire educators.



LEXILE® & QUANTILE® HUB

NEW K - 2 TOOLS SUPPORT DECODABILITY DOWN TO THE LETTER

READING AND MATH TOOLS AVAILABLE AT [HUB.LEXILE.COM](https://hub.lexile.com)

FREE, PREMIUM ACCESS FOR NEW HAMPSHIRE EDUCATORS

Lexile® & Quantile® Growth Planners

MONITORING & GUIDING STUDENT GROWTH TOWARDS CAREERS

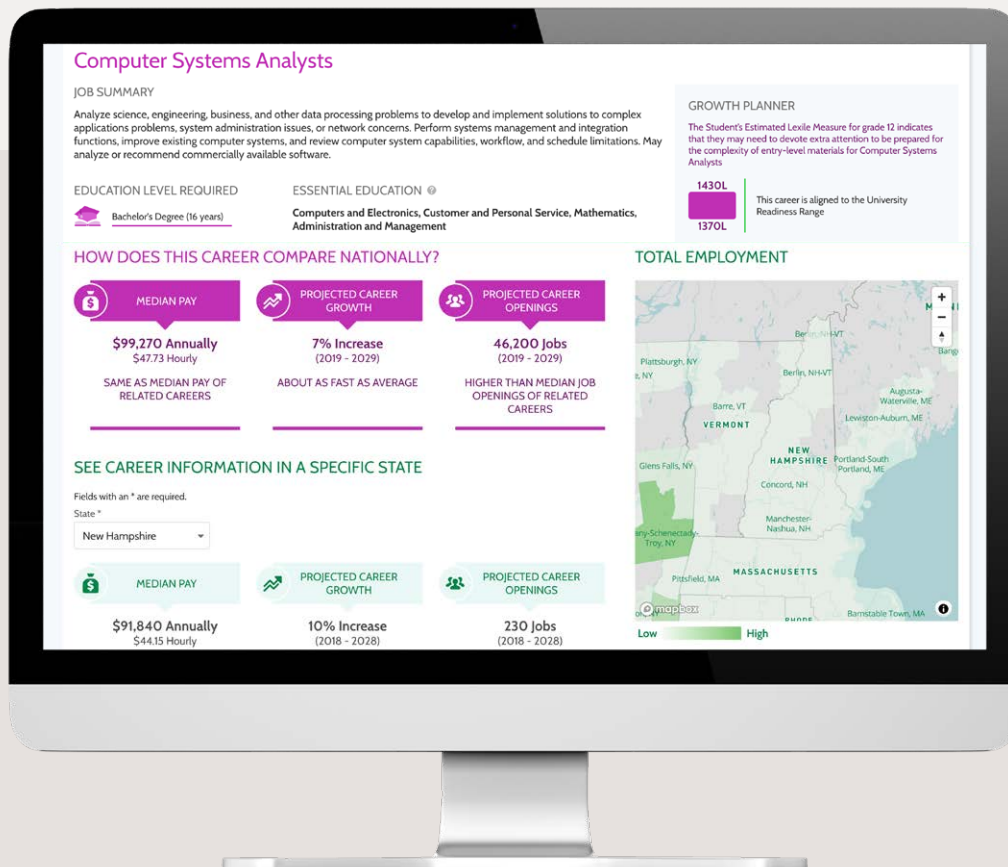
We hear from teachers all the time that “students love to see their scores go up” and that they like reading materials that are the “right ‘fit’ for them.”

Responding to that demand, we developed a growth planning tool to monitor and guide students as they improve reading and math skills. The Growth Planners places assessment results and scores on a growth trajectory curve, charting a pathway for students to ensure readiness as they pursue their career goals. As teachers differentiate instruction for students and parents support their child’s learning, the Lexile and Quantile Frameworks enable

them to provide appropriate materials and resources to match ability and encourage growth.

With the Growth Planners, New Hampshire educators, students and families can:

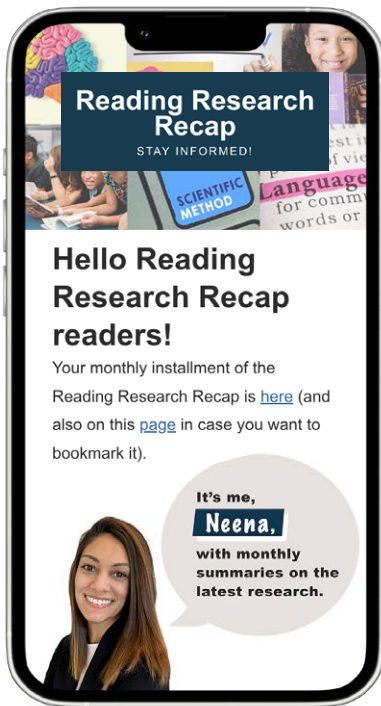
1. Forecast student growth toward college and career readiness and access resources to support preparedness.
2. Identify the reading and math demands needed for entry into hundreds of careers.
3. Explore job market data at the national and regional levels.



USE THE
LEXILE AND
QUANTILE
GROWTH
PLANNERS AT
HUB.LEXILE.COM

◆ Reading Research Recap Series

Every month, our Vice President of Science of Reading Dr. Neena Saha curates and summarizes the latest research on the best practices and insights for assessing or teaching reading in the *Reading Research Recap* series.



MEET NEENA!

Neena has several years of experience as a classroom teacher. She received her Master's in Educational Neuroscience from Columbia University and her Ph.D. in Special Education from Vanderbilt's Peabody College. At Vanderbilt, her research focused on individual differences in decoding skill acquisition. Her publications can be found in *Reading & Writing: An Interdisciplinary Journal*, *The Journal of Learning Disabilities*, and *Annals of Dyslexia*. Neena joined our team over a year ago and has led the development of our new phonics-focused tools.



SIGN UP TO RECEIVE
MONTHLY NOTIFICATIONS
FOR THE READING
RESEARCH RECAP!

www2.metametricsinc.com/sign-up-reading-research-recap

◆ The Granite State Department of Education team is a committed group of professionals!

One of the team's strengths is its laser focus on communication. The team works to deliver information to families and educators through professional learning, in person conferences and direct to parent communication.

We are grateful to Anne Wallace's steadfast and dedicated service to the citizens of the state. She is constantly looking for ways to engage educators in thoughtful and meaningful ways.



Students, families, and educators are well served by the 'disruptive innovators' at the Department.

We thank you for all that you do!



Friendly Faces at MetaMetrics

We hope you think of us as an extension of your DOE team. We are passionate about education and helping all kids succeed — our goal is to positively impact every classroom across New Hampshire.



Government Relations



LUCI WILLITS
SENIOR VICE PRESIDENT,
GOVERNMENT RELATIONS
LWILLITS@LEXILE.COM

Luci began her education public policy work as Communications Director for the Idaho Board of Education. She advocated for increased accountability and redesigned high school graduation requirements to include additional STEM courses for Idaho students. Now, Luci brings her proven experience to support state education agencies across the nation.



JULIE WORDEN
DIRECTOR,
GOVERNMENT RELATIONS
JWORDEN@LEXILE.COM

Julie's influence and commitment to our highly-valued state partnerships at MetaMetrics spans over a decade. Her state-level impact has reached nearly all 50 state departments of education and the U.S. Virgin Islands.

Engagement & Success



MATT COPELAND
DIRECTOR,
EDUCATOR ENGAGEMENT
MCOPELAND@LEXILE.COM

A sixth-generation classroom teacher, Matt was also a Language Arts and Literacy Consultant for the Kansas State Department of Education before joining MetaMetrics. During his 10 years of teaching he was recognized as a Milken National Educator. Additionally, Matt served as president and executive board member of the Kansas Association of Teachers of English.



DAVID BARNES
MANAGER, PROFESSIONAL
LEARNING PROGRAM
DBARNES@LEXILE.COM

David came to MetaMetrics after nine years at the Kansas State Department of Education, and 15 years as a teacher. His classroom experience includes teaching math and science for grades 7-12, and his state department work focused on standards and assessments as well as school accreditation.

APPENDIX



Comparing 2022 Assessment Results With Grade Level Demands in Reading and Mathematics

Lexile and Quantile measures are powerful tools to illustrate student achievement on a common scale over time. Our mission is to bring meaning to measurement within your current testing partners. Our research team can help state leaders look at end of year summative data in conjunction with grade level text demands using Lexile and Quantile measures.

To do this, we need the mean summative test scores for each grade tested in math and reading. No school, district, personal information or identifiable data is needed.

Once your state delivers this to our team, we will put together the results and deliver them within 60 days.

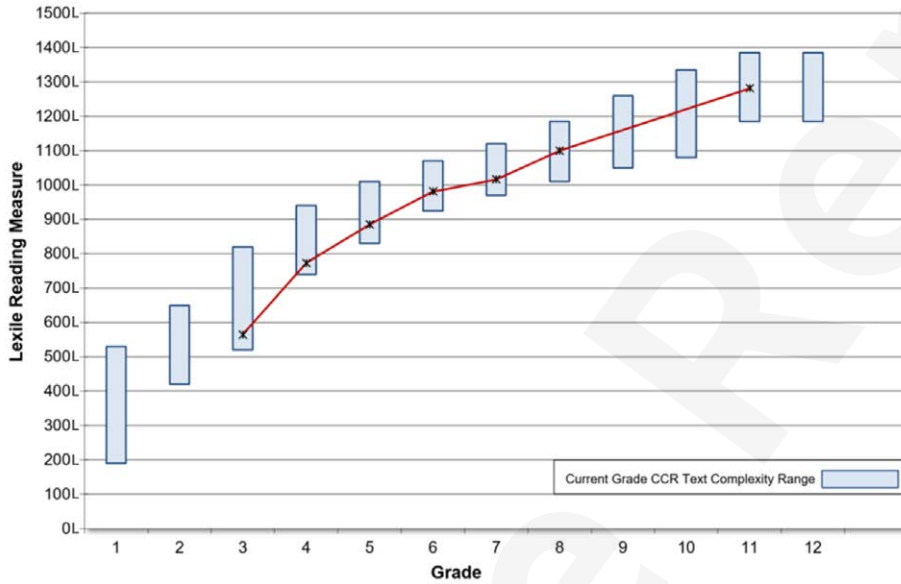


If this interests you, please let us know!
Email Luci Willits at lwillits@lexile.com.

VIEW SAMPLE
GRADE LEVEL
DEMANDS
COMPARISON
REPORTS ON THE
FOLLOWING PAGES.

SAMPLE LEXILE (READING) RESULTS

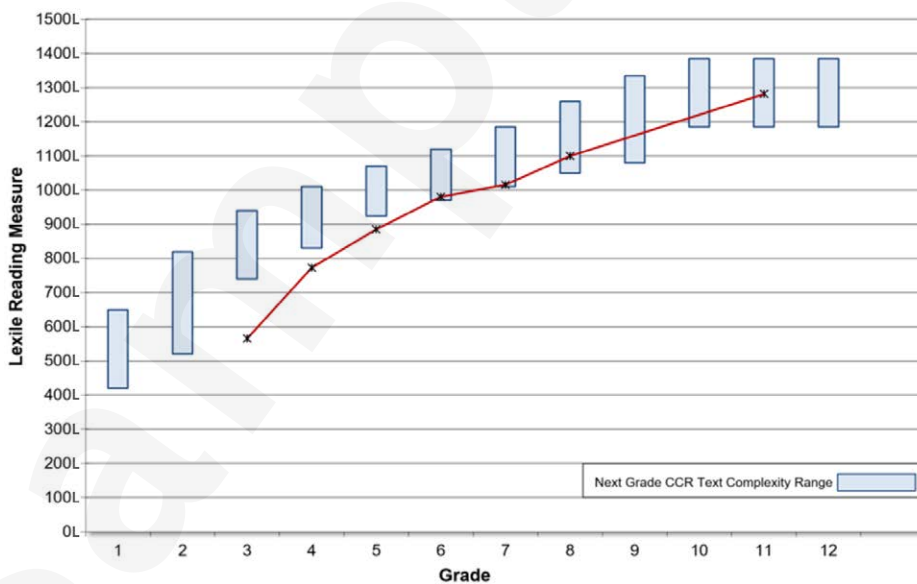
Figure 1. Mean sample test results (Lexile measures) in Spring 2022 compared with the reading demands of the current grade level.



From Figure 1, we can infer:

- On average, elementary students were able to engage with many grade-level reading materials.
- Middle school and Grade 11 students were able to engage with most grade-level reading materials encountered in the classroom during the current school year.

Figure 2. Mean sample test results (Lexile measures) in Spring 2022 compared with the reading demands of the next grade level.



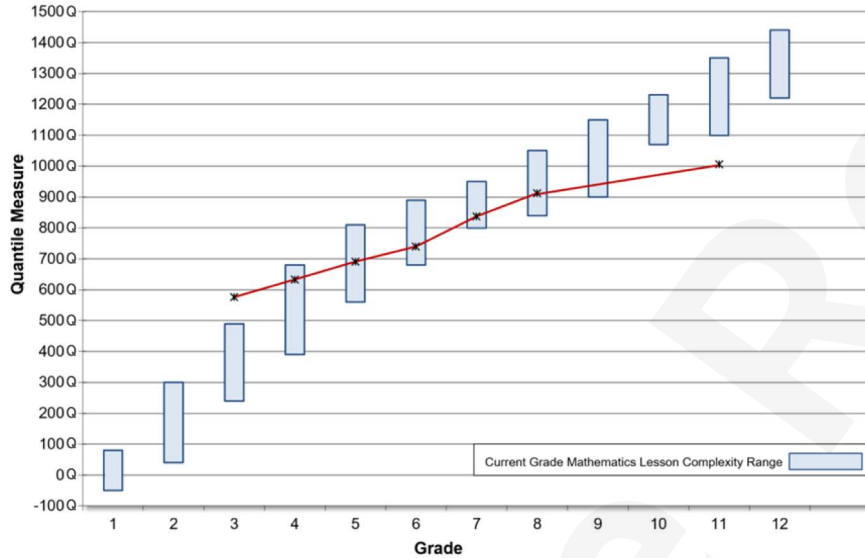
From Figure 2, we can infer:

- On average, elementary and middle school students may struggle with the reading demands in their next grade level and may need instructional support to engage with those reading materials.
- Grade 11 students will likely be prepared to engage with the reading material they encounter and may only need instructional support in some cases.

* MEAN LEXILE MEASURE AT EACH GRADE LEVEL
 — [RED LINE] TREND IN MEAN STUDENT READING ABILITY ACROSS GRADE LEVELS

SAMPLE QUANTILE (MATHEMATICS) RESULTS

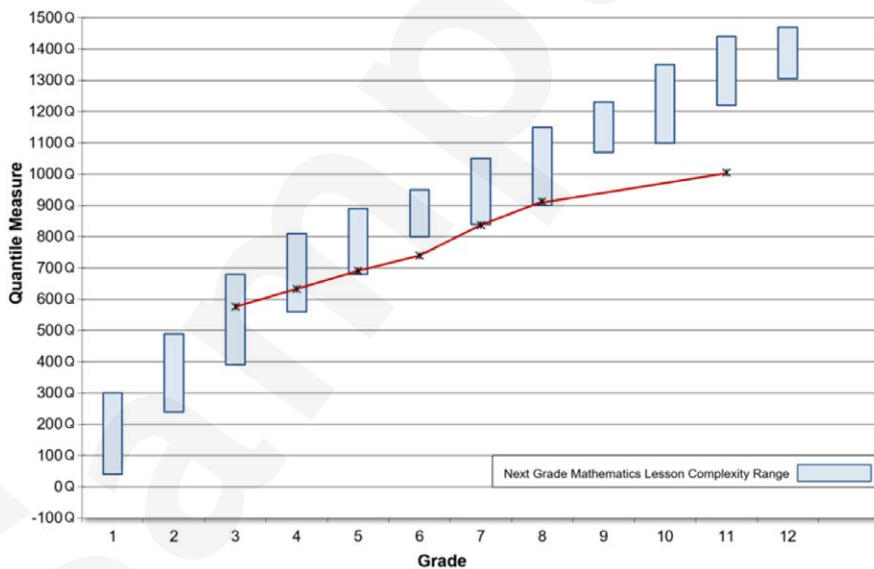
Figure 3. Mean sample test results (Quantile measures) in Spring 2022 compared with the mathematical demands of the current grade level.



From Figure 3, we can infer:

- On average, elementary students were well-prepared to engage with the classroom mathematics demands during the school year.
- Middle school students were able to engage with the more basic mathematical demands, but may have needed additional instructional support to engage with the more complex mathematics content.
- Grade 11 students may have struggled with the mathematics content they encountered in the typical Algebra II classroom and may have required instructional support to engage with that classroom content.

Figure 4. Mean sample test results (Quantile measures) in Spring 2022 compared with the mathematical demands of the next grade level.



From Figure 4, we can infer:

- On average, Grade 3 students appear well-prepared to engage most grade-appropriate mathematics classroom content at the next grade level.
- Grade 4 students will likely engage the more basic mathematics content they encounter at the next grade level, but may need additional instructional support to engage with the more complex mathematics content.
- Grades 5-8 and Grade 11 students will likely struggle with the mathematics content at the next grade level and may require instructional support to engage with most classroom mathematics content.

Note: The range presented in the figure for Grade 11 represents the mathematics content typically encountered in a Grade 12 Pre-calculus and Trigonometry course.

* MEAN QUANTILE MEASURE AT EACH GRADE LEVEL
 — [RED LINE] TREND IN MEAN STUDENT MATHEMATICS ABILITY ACROSS GRADE LEVELS



MetaMetrics®

Visit Us Online

[MetaMetricsInc.com](https://www.MetaMetricsInc.com)

[Hub.Lexile.com](https://www.Hub.Lexile.com)

