



MetaMetrics® Score Interpreter

UNLOCK INSIGHTS AND FORECAST STUDENT GROWTH

Now your Lexile and Quantile-powered assessments empower educators with a complete system for interpreting scores, forecasting growth, and identifying resources to support students.

The new **MetaMetrics® Score Interpreter** delivers Lexile® reading and Quantile® math measures, providing meaningful data that can be used to interpret student scores. We added advanced, research-based features that make these measures even more powerful tools to support student growth. The Score Interpreter includes three components that work together to make your products essential in today's classroom:



Scoring
API



Forecasting
API



State Performance
Standards Database

Scoring API: Provide a Truer Snapshot of Student Ability

The Scoring API leverages continuous scoring, which tracks progress across multiple test events and smooths test scores to reduce fluctuation. By combining prior test data with current assessment results, you will provide a more consistent snapshot of learning over time. Additional features include:

- Secure transfer of anonymized test data for analysis.
- Real-time delivery of measures for display within your product's interface.
- Quick and easy implementation; you don't need to install or manage anything. We provide all documentation to configure simple code and credentials for access.



**WITH THE
SCORE
INTERPRETER,
YOU CAN:**



PROVIDE a truer snapshot of student ability and reduce test score fluctuation with continuous scoring.



FORECAST student reading and math performance on state end-of-year tests.



COMPARE student test results to state proficiency standards.

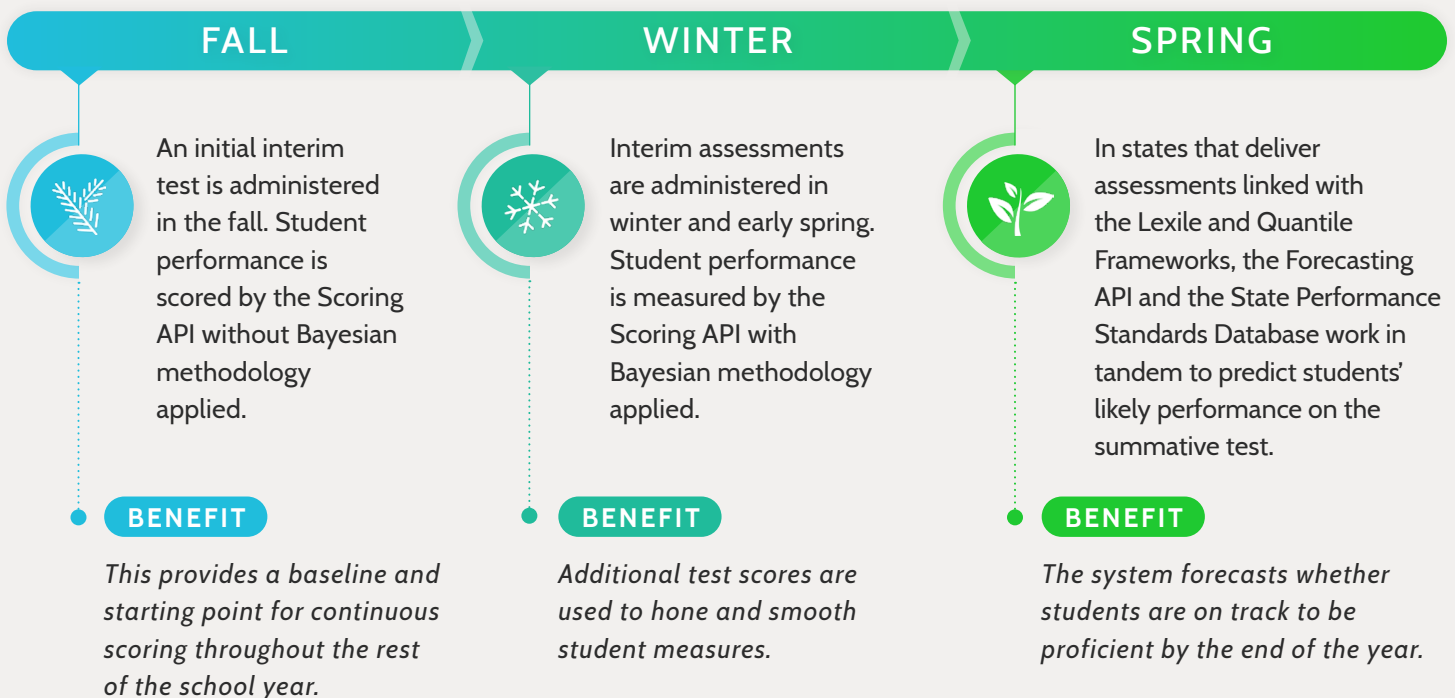
Forecasting API: Predict How Students Will Improve and Perform

Educators need more insight into future learning growth now more than ever. The Score Interpreter supercharges your system with forecasting capabilities that give teachers an accurate, reliable view of students' improvement over time and likely future performance on end-of-year state tests. This information empowers teachers with early warnings so they can support the students who need it most.

State Performance Standards Database: Relate Lexile and Quantile Measures to Proficiency Levels

By relating Lexile and Quantile measures to state performance standards, you can ensure your product predicts where students will likely fall in a state's specific performance levels at the end of year.

The Score Interpreter Provides Insights Throughout the Year



Learn More

Our Support Team is available to answer questions and provide developers with support to ensure seamless integration. For more information, please contact:



Eric Lane
Director, New Partnerships
elane@Lexile.com



Schedule a meeting!
calendly.com/elane-11

